

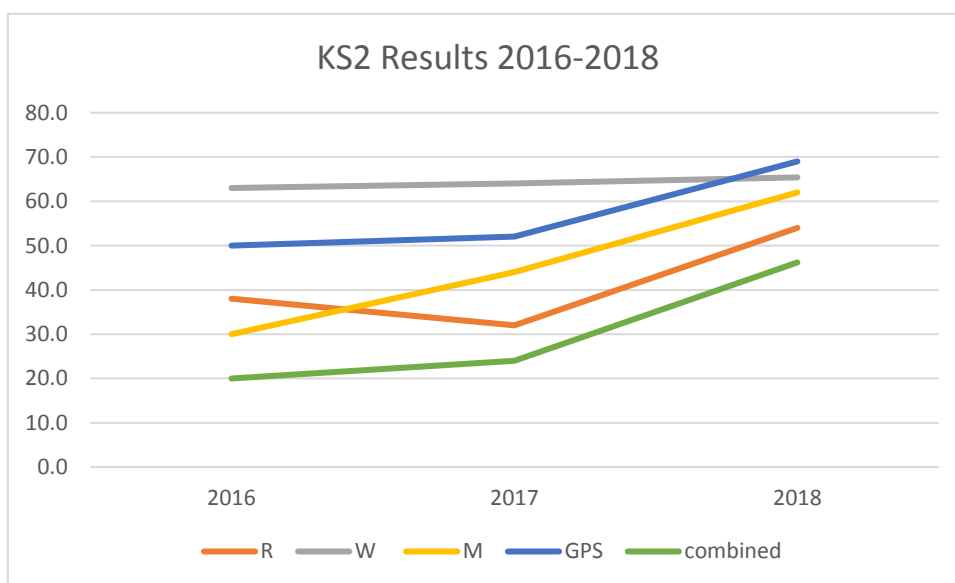
Y6 Data Analysis 2017-2018

Cohort Information

- 26 children in the year each = 3.8%
- 16 Male, 10 Females
- 9 SEND = 35 % including 6 with Ed Psych reports and diagnosed SEND needs
- 9 EAL = 35%
- 11 Pupil premium ever 6 = 42%
- 12 matched pupils from EYFS 2011 - 2012
- 17 matched pupils from KS1 2013 - 2014

Y6 data

Subject	Percentage of pupils achieving the expected standard: school	Percentage of pupils achieving the expected standard: nationally	Average scaled score: school	Average scaled score: nationally
English reading	54%	75%	102	105
English grammar, punctuation and spelling	69%	78%	103	106
Mathematics	62%	76%	101	104
English writing (teacher assessment)	65%	78%	N/A	N/A
Science (teacher assessment)	77%	82% (2017 data)	N/A	N/A
Combined Reading, writing & Maths	46.2%	64%	N/A	N/A

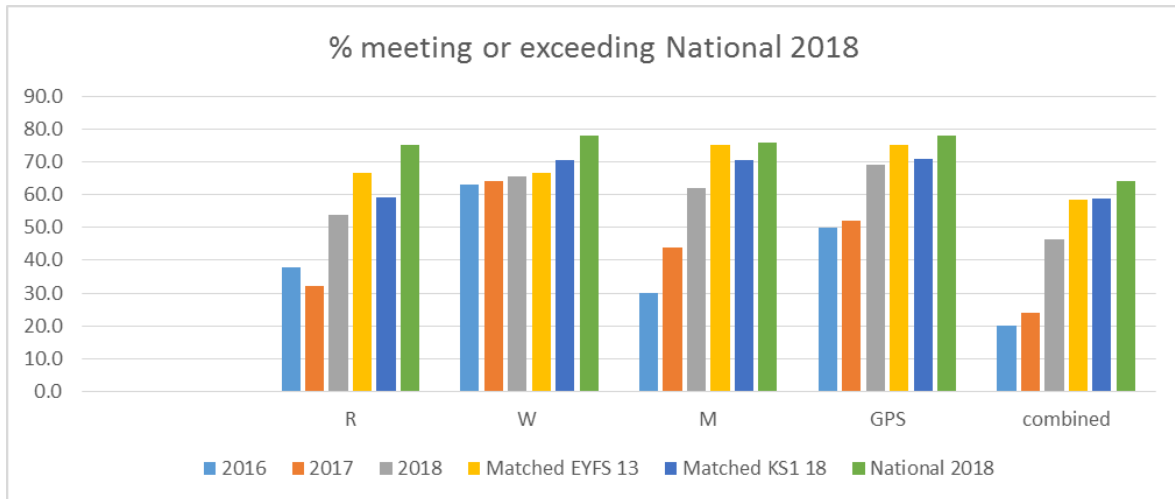


- All results below National figures, but have improved over time.
- GPS was the highest result with 69% of pupils meeting or exceeding the expected
- Reading, Maths, GPS and combined have improved from previous year (between 17-22%)
- Reading remains low 54%, but increase in Greater depth (GD) to 23% (4%)
- Writing slightly improved. Increase in GD to 15.4 (4)

% at expected	2016	2017 (GD)	2018 (GD)	Matched EYFS 12	Matched KS1 17	National 2018	Bedford Borough
R	38	32 (4)	54 (23)	66.7 (16.7)	59 (23.5)	75	
W	63	64 (4)	65.4 (15.4)	66.7 (16.7)	70.6 (12)	78	
M	30	44 (16)	62 (3.8)	75 (3.8)	70.5 (3.8)	76	
GPS	50	52 (8)	69 (23)	75 (33)	71 (33)	78	
combined	20	24	46.2 (3.8)	58.3 (3.8)	58.8 (3.8)	64	

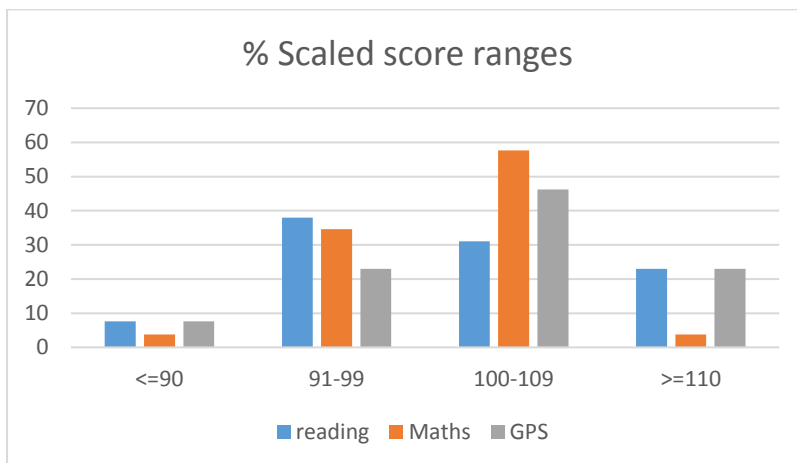
- Attainment for matched pupils, both for KS1 to KS2 and EYFS to KS2 is considerably higher than for the cohort.

Y6 Data Analysis 2017-2018



Average Scaled Scores

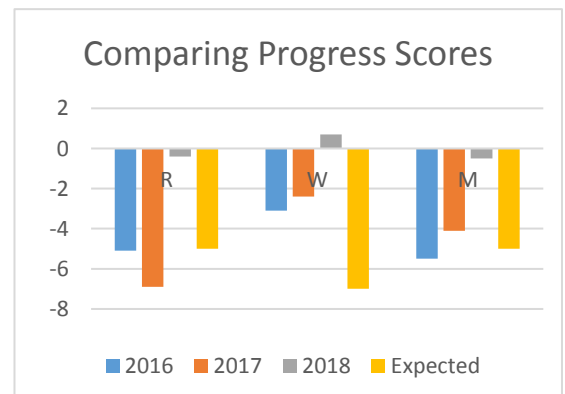
	2017	2018	Matched EYFS 12	Matched KS1 17	National 2018
Reading	97	102	104	103	105
Maths	99	101	102	101	104
GPS	101	103	105	103	106



- Average scaled scores have increased from the previous year, now above 100 for reading, Maths & GPS.
- 15.4% achieved Greater depth in writing (4%)
- 23% achieved a scaled score of greater than 110 for Reading (4%)
- 23% achieved a scaled score of greater than 110 for GPS (8)
- 3.8% achieved greater than 110 scaled score in Maths (16%)
- The high attaining pupils exceeded 110 scaled score showing the teaching and learning input to enable these children to achieve, above national expectation.

Progress KS1 - KS2

	2016	2017	2018	Expected
R	-5.1	-6.9	-0.4 (-2.7 to 1.9)	-5
W	-3.1	-2.4	0.7 (-1.5 to 2.9)	-7
M	-5.5	-4.1	-0.5 (-2.6 to 1.6)	-5



- Progress scores have improved from previous year, with writing being above zero showing the school has made more progress than similar schools.

Y6 Data Analysis 2017-2018

Progress for the cohort over the year

- Using internal data and assessment, the cohort have **exceeded** or met the expected 3 point progress in R, W & M.

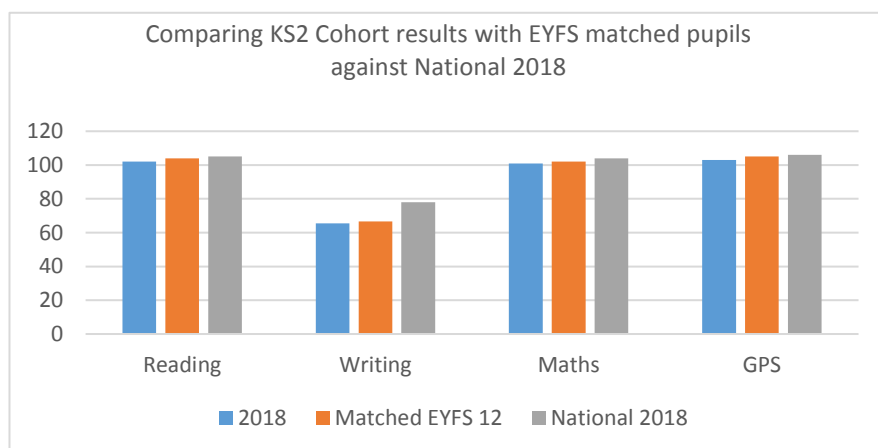
	Expected year	Reading	Writing	Maths
Cohort year progress	3	5	5.85	4

- Mock SATs September 2017 (2016 SAT papers used) compared with actual results, shows good progress over the year.

% achieving expected of above	September 2017 Mocks	May results 2018 SATs
Reading	26.9	54
Writing	19.2	65.4
Maths	3.8	62
GPS	23	69

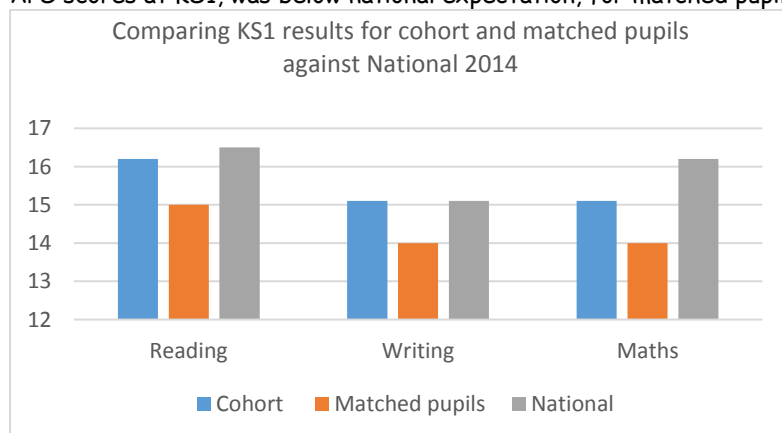
EYFS data for Y6 matched pupils

- 12 pupils, 4 SEND, 3 PP, 3 EAL from EYFS 2011-2012
- Reading, Writing and Maths was in line with National expectation of 6 points, with 3 children scoring below.
- KS2 results show, 4 matched children, not meeting expectation for Reading & writing. 3 children for Maths and GPS. This is in line with their EYFS results.
- Comparing EYFS matched pupils in Y6 to cohort results, scaled score (writing at expectation or above). This shows the pupils have achieved higher, for Reading, writing, GPS & Maths, than the Y6 cohort.
- Phonics result for this group was only 53% (pass 32). Showing good progress in GPS and writing



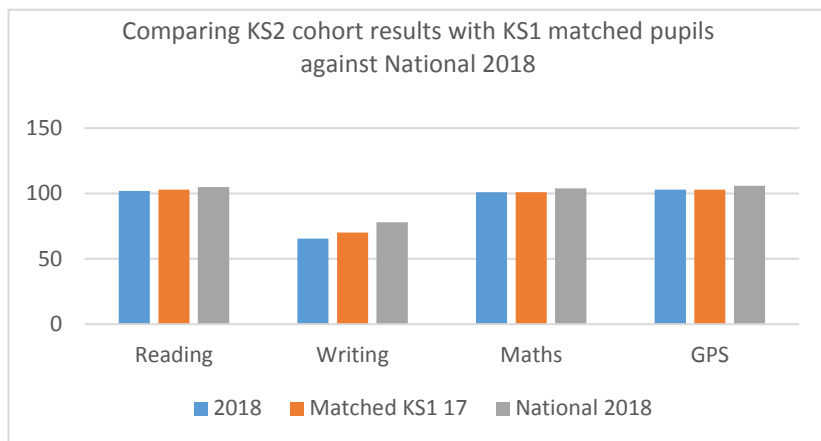
KS1 data for Y6 matched pupils

- 17 matched pupils from KS1 2013- 2014.
- APS scores at KS1, was below national expectation, for matched pupils, in Reading, Writing and Maths



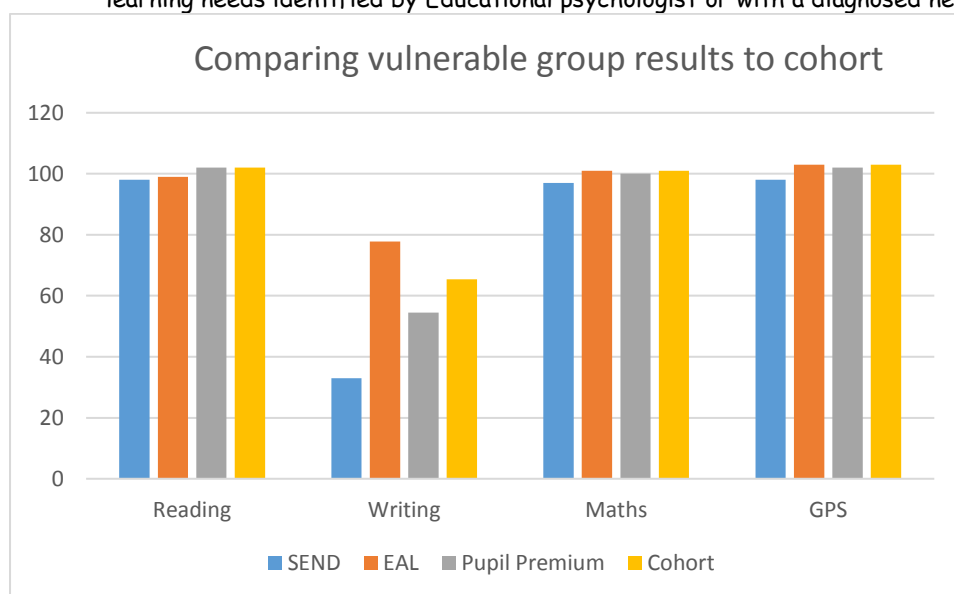
- Comparing KS1, matched pupils in Y6, scaled score (writing at expectation or above). This shows the pupils have achieved higher, for Reading & writing, than the Y6 cohort. The group are in line for GPS & Maths, showing good progress as they move closer to the National expectations.

Y6 Data Analysis 2017-2018



Vulnerable groups

- 73% of the children belong to at least 1 vulnerable group. 42% belong to 2 or more vulnerable groups. 6 children learning needs identified by Educational psychologist or with a diagnosed need.



Based on scaled scores for R, M, GPS, % expected or above W

EAL

9 in the group, 3 SEND for learning, 4 PP,

- The group are out performing the cohort in writing, 77.7% meeting or exceeding National expectation (N78%)
- The group is in line with cohort Maths and GPS
- The group is slightly below cohort results for reading, due to significantly low scores for the 3 SEND pupils.

Pupil Premium Ever 6

11 in year group, 4 SEND, 4 EAL

- PP group meeting cohort results for reading and only slightly below for Maths and GPS.
- PP are significantly below for writing, however 3 children were awarded Greater depth.

Gender

10 females, 16 males

- Minimal difference in Reading and GPS for Males and females.
- Maths results are the same
- Girls achieve significantly better in writing. There is only 1 female recognised as SEND, compared with 9 boys. However the boys made outstanding progress - 5.5 (3 expected with internal assessments)

SEND

10 in the group, 1 Female, 9 Males, 3 EAL, 4 PP

- Slight gap for all subjects, significant gap for writing.
- 4 children met Scaled score of 100 or above for GPS, 1 child at greater depth.
- 3 children met Scaled score of 100 or above for, Maths, Writing and Reading (2 GD)

Y6 Data Analysis 2017-2018

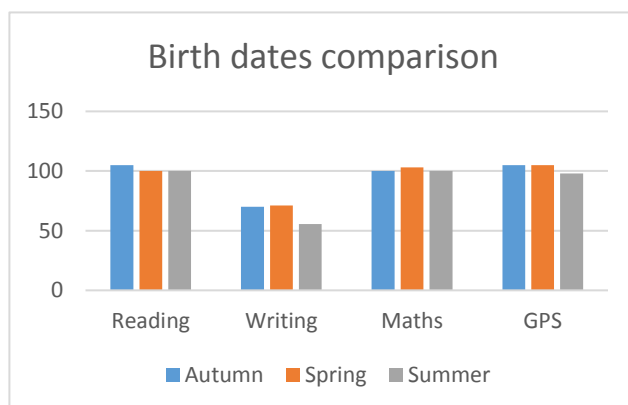
- Writing shows the largest gap, however the average point progress for the group in writing was 4.8 (3 expected - using internal assessments and tracking). This shows **Good** progress.

Birthdays

10 Autumn

7 Spring

9 Summer



- Little difference between Autumn and Spring born.
- Summer born show slightly lower results across the board. The biggest difference, for this group, is in writing. 4 SEND children within this group are the highest needs, 2 of these are also EAL.

FFT target predictors - set 50th percentile

%	Met & exceeded FFT target	FFT Target not met	Comment
Reading	76	24	3 of the 6 children not meeting FFT, joined the school at the end of KS2. FFT based on data at EYFS, KS1. 2 of the 6 EAL
Writing	92	8	2 children, both missed GPS by 1 or 2 scaled score - close to meeting FFT target.
Maths	80	20	4 of the 5 children not meeting FFT, joined the school at the end of KS2. FFT based on data at EYFS, KS1

Met or exceeded, may mean not achieved at National expectation, but in line with predicted.